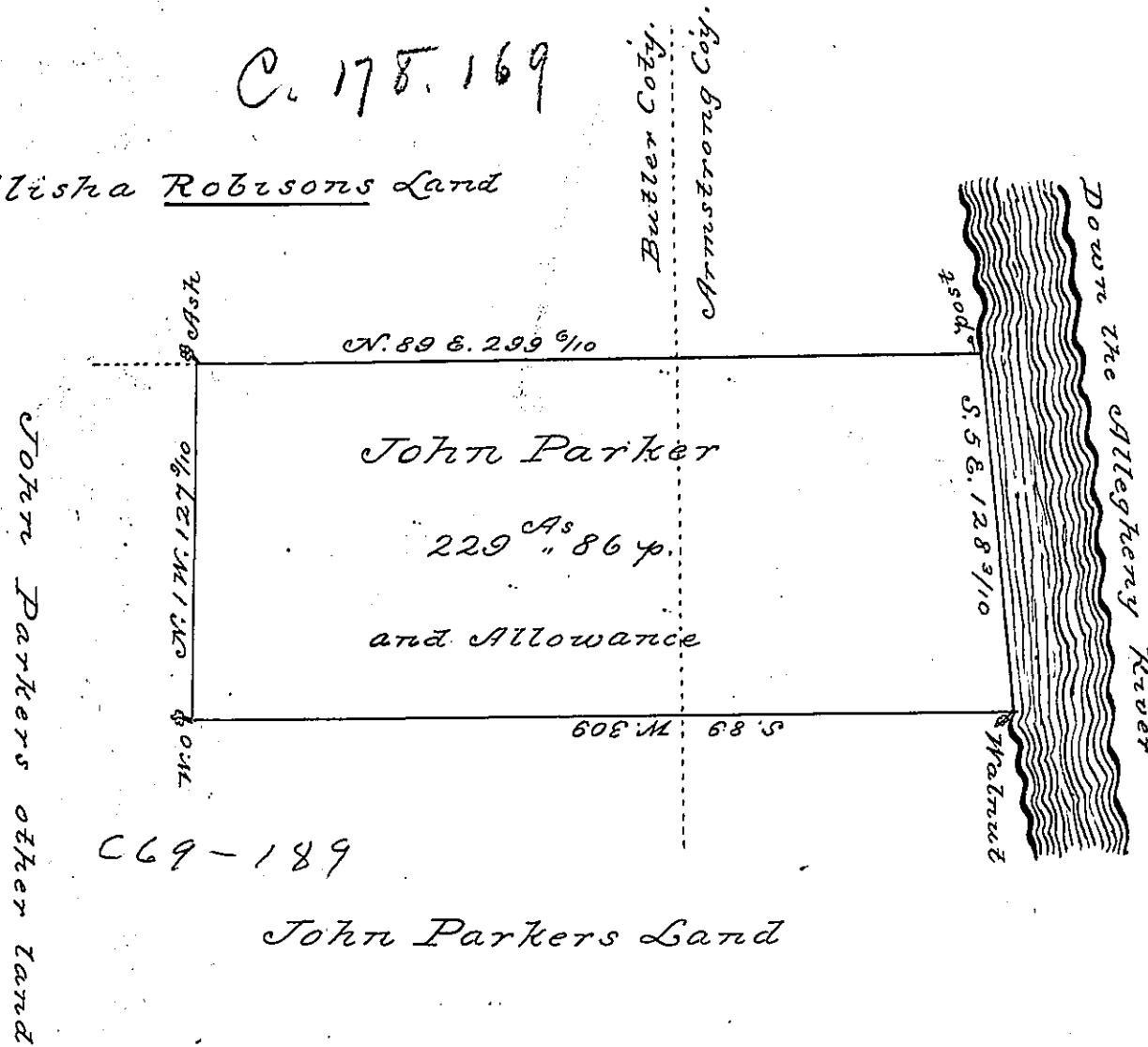


C. 178. 169

Elisha Robisons Land



In pursuance of an actual Settlement and Improvement there was Surveyd for John Parker the above described Tract of Land Containing two hundred and twenty nine a^s and eighty six perches with an allowance of Six p. Cent for roads &c. Situate Partly in Butler and partly in Armstrong Counties and adjoining the Allegheny river Surveyd September 22nd 1836

John Taylor Esquire
Surr. Gen^l. of Penna

J. H. Lyon D. S.

IN TESTIMONY that the above is a copy of the original remaining on file in the Department of Internal Affairs of Pennsylvania, made conformably to an Act of Assembly approved the 16th day of February, 1833, I have hereunto set my Hand and caused the Seal of said Department to be affixed at Harrisburg, this

First day of December 1896

James W. Latta
Secretary of Internal Affairs.